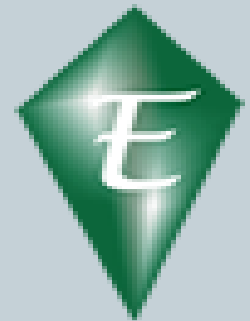




**e-PAYMENT: HARNESSING  
OPPORTUNITIES FOR  
GROWTH AND  
PROFITABILITY**



**ENTERPRISE LOGISTICS SPECIALE LIMITED**

# ENTERPRISE TRANSPORT AND LOGISTICS (ENTRALOG)



- Cash handling arm, Alvac.
- ENTRALOG is corporate member of Commonwealth Business council, London. An association having as its members businesses from over 77 common wealth countries including Australia ,Canada and Britain as Leader.
- ENTRALOG is a partner to Microsoft in vending of software
- ENTRALOG is a partner to Cisco in vending of cisco products.

# ENTRALOG (Continued)



- **Enterprise Logistics Speciale** in partnership with **IIJT** provides intensive IT training which includes CCNA, CompTIA, Windows, Oracle, Linux-RedHat among others
- Enterprise Transport and Logistics Limited (ENTRALOG) through its subsidiary – ENTERPRISE LOGISTICS SPECIALE LTD is making huge investment in Technology platform that will vend solutions to banks and financial sector in Nigeria. It will offer technological solution as a service (SAAS) to drive automation optimization of financial services, thus assisting evolution of a robust Shared service model.

# OUR CLIENTS



# Common Types of e-Payment Systems



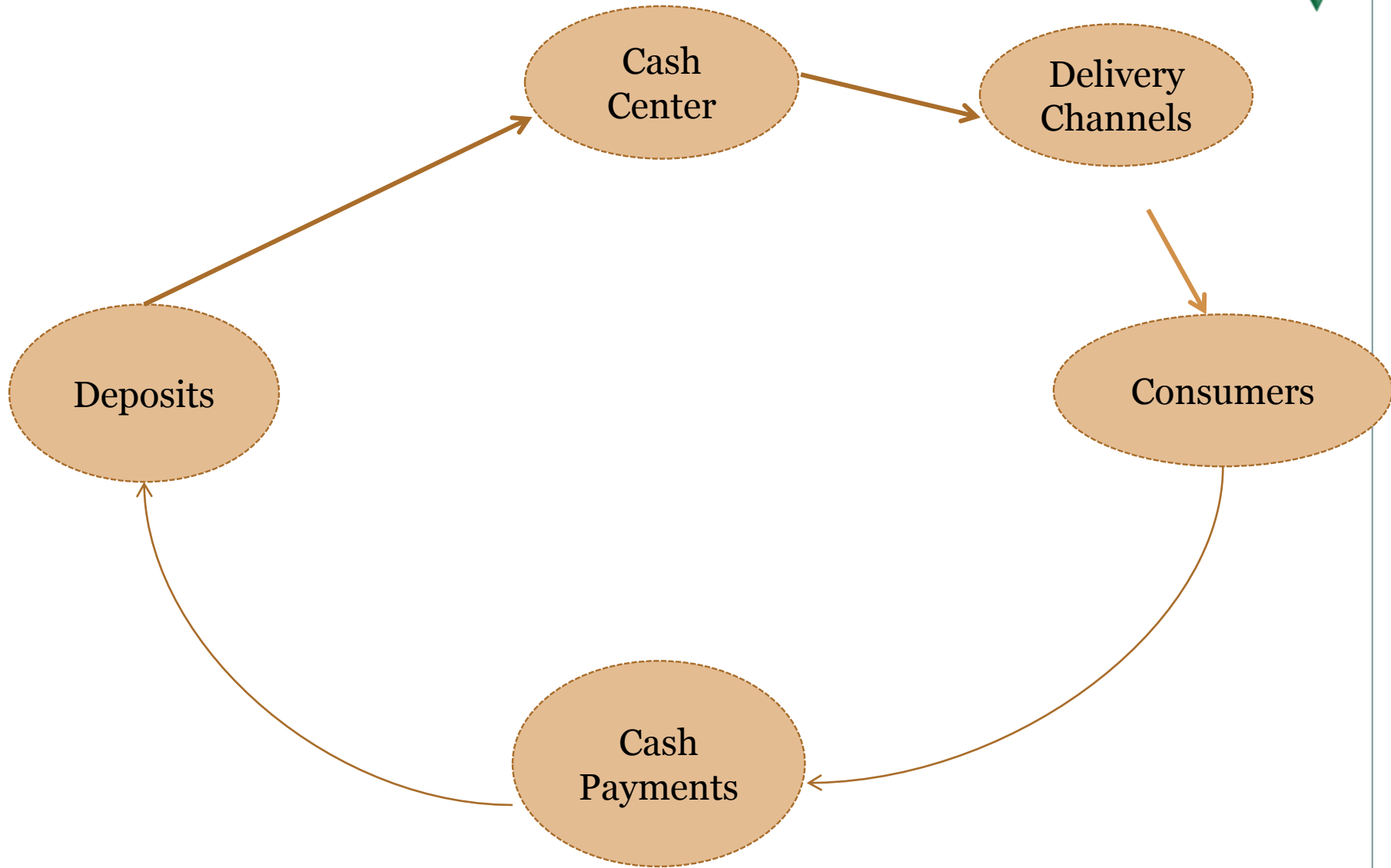
- Cards
- Internet
- Mobile Phones

# Facts and Figures



- According to International Telecommunication Union (ITU), there were about 45 million internet users in Nigeria as of 2011 and this number is expected to rise steadily in coming years.
- 46% of Nigerians are not financially included.
- Also, according to Euromonitor International, online retailing in Nigeria recorded a 25% growth estimated at about N11 billion (about \$100 million)
- 90 million transactions done monthly via ATMS with an estimated value of over N100 billion.
- N1.2 trillion can be saved through branchless banking.

# Current Cash Circulation Model



# Typical Deposit Device (Look and Feel)





# Key Technology Requirements to address market needs

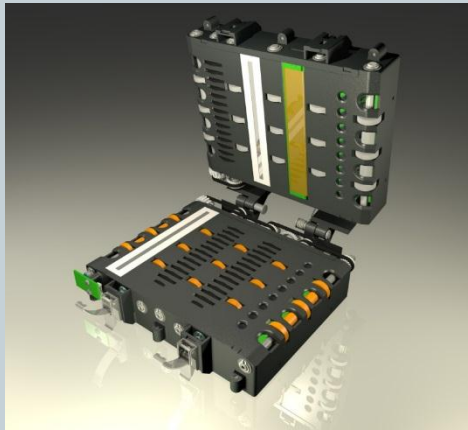
- Security
- Accuracy
- Accountability
- Reliability
- Capacity
- Cost Effectiveness

# Security



## Physical Security

- 8mm
- UL291
- CEN I / III / IV



## Banknote Validation

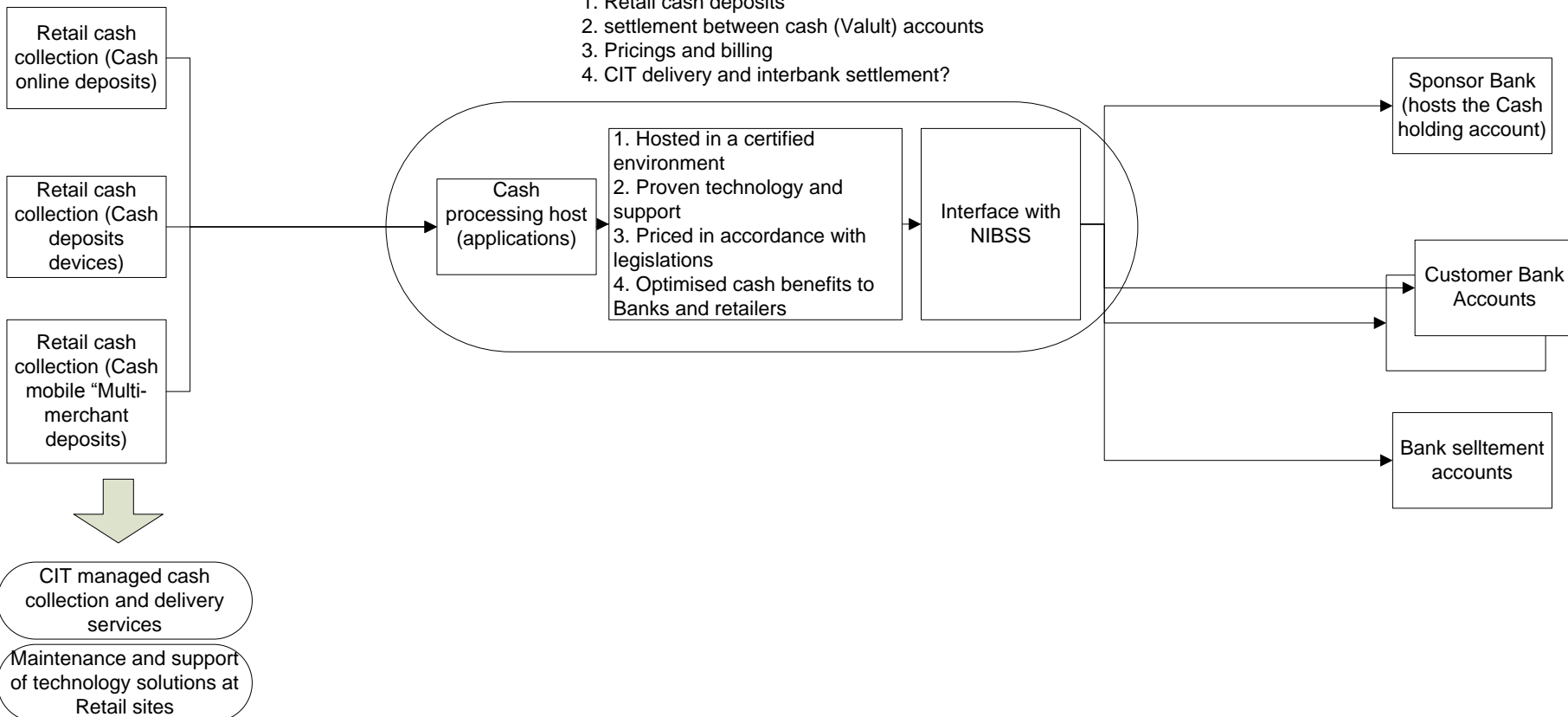
- Dimensions
- Ultraviolet
- Infrared
- Multiple images
- Magnetic

# End to End Managed Service



## Retailer Management System:

1. Retail cash deposits
2. settlement between cash (Valut) accounts
3. Pricings and billing
4. CIT delivery and interbank settlement?



# How To Harness e-Payment Potential



- Shared platform (IAAS and SAAS)
- Agency banking for cash recycling.



**Thank You**